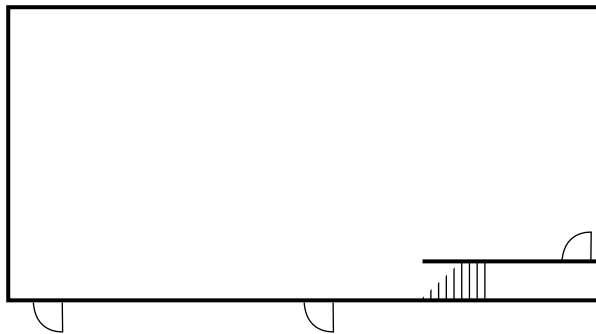


TOWER

OUR MOST VERSATILE SPACE

Originally a dynamic performance space, the **Tower** has become a sought-after venue for bespoke events, performances and workshops. The maximum capacity for the Tower is 100 patrons.



/ Room size is 16.5m x 7.8m
/ PA and blackout curtain.

IMAGES THIS PAGE: The cast of *Little Emperors* Malthouse Theatre's Season 2017 production rehearse in the Tower amongst custom-built water stage; audiences celebrate after our Season 2017 launch.

IMAGE NEXT PAGE: our Tower space set-up for guests prior to an exclusive event.

PHOTOS: Tim Grey, Charlie Kinross and Phoebe Powell

