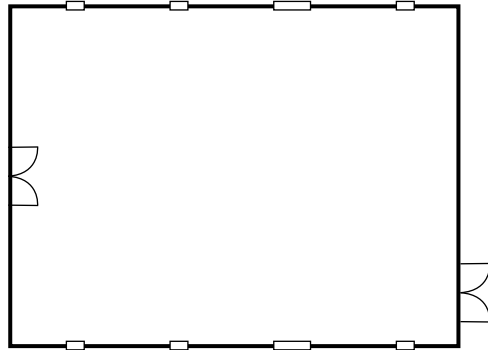


BAGGING ROOM

OUR HISTORIC SPACE

Host your next event or workshop in this large, bright space where the magic happens, and our shows take shape. The maximum capacity for the Bagging Room is 150 patrons.



/ Room size is 15m x 12m
/ White board and PA
available in the room.
Projector available upon
request.



IMAGES THIS PAGE: The cast of Malthouse Theatre's production *Trustees* (Season 2018) rehearse in our Bagging Room space; The Bagging Room hosts guests during an interval meal for our Season 2019 production *Cloudstreet*.

IMAGE NEXT PAGE: The Bagging Room awaits the arrival of guests for an exclusive function.

PHOTOS: Nicolai Khalezin and Phoebe Powell